

SPEARS

S-SYSTEM



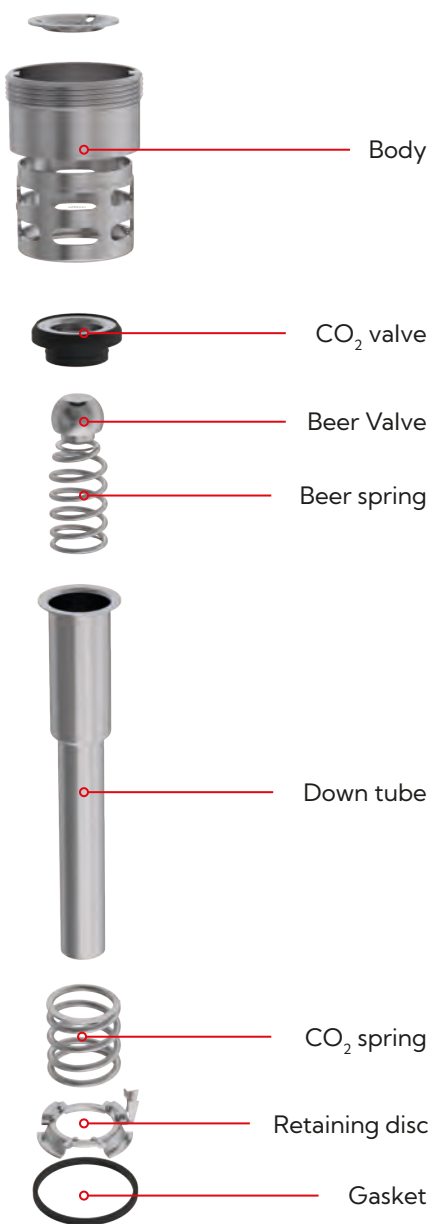
AOBAOSI

SPEARS

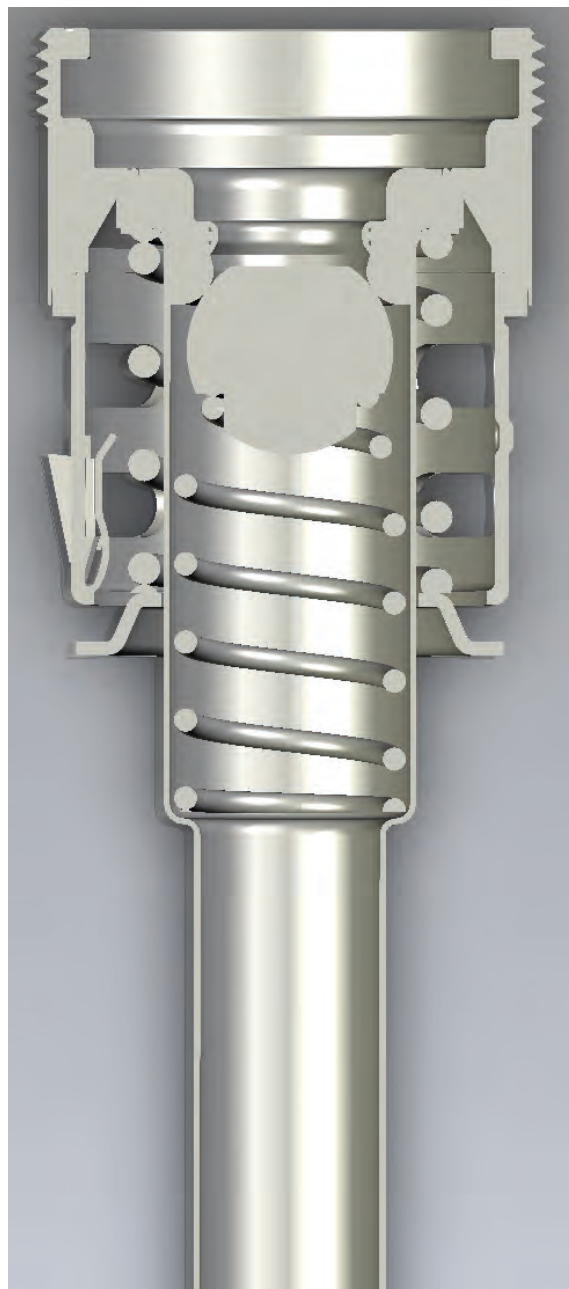
S-SYSTEM

The Aobaosi S-System features a secure well-type design with dual-valve operation for smooth and controlled beer flow. Engineered for precision and reliability, this spear ensures a seamless keg tapping experience.

Exploded View



Cut In Two View



SPEARS

S-SYSTEM

Assembly Drawing

70-XS-MC

weight calculation ±5%/Gewichtsberechnung ±5%

$m[g]=H3-9. [mm] \pm 0.315 \frac{g}{mm} + 300g$

Pos	Quantity	Art.-No.	Title
1	1	JM-SX-02-1	Body
2	1	CJ-02	Spring Seat
3	1	JM-SX-01-2-1	CO2 Valve
4	1	JM-SX-01-3	Beer Clip
5	1	JM-SX-01-4	Spring 5#
6	1	JM-SX-01-7	Tube
7	1	JM-SX-01-6	Retaining Disc
8	1	JM-SX-01-5	Spring 8#
9	1	JM-AX-01-6	Sealing Ring

Mark	Revision	Area	File No	Sign	Date
Design			Standard		
Calculation			Discussion		
Inspection					
Procedure			Sign		

Assembly Drawing

Zhejiang Aobaosi Machinery Co. LTD			
S type Spear (With Lock)			
JM-SX-02			

Phase Marker	QTY	Weight	Scale

Total 1 page	The first page
--------------	----------------